

Wiveliscombe Town Centre

Revised VISION

October 2022

The centre of Wiveliscombe, and especially The Square, provides a focus for our community life. It has some of our grandest buildings and also many vital shops and services. But parts of the centre are tired and appear unloved, while congestion can often cause annoyance and problems.

Place-making project

In July 2021, a place-making project was set-up to find ways to improve Wivey town centre and address current issues.

Following consultation in October 2021 and January 2022, a town centre vision was prepared and published.



A summary of the vision was delivered to all households in Wiveliscombe and further consultation undertaken in June 2022.

The vision report, work of the place-making group and responses to consultation findings can be viewed at: www.wivey.co.uk

New issues were raised by the June consultation. As a result, it was decided a revised version of the final vision was needed, as presented in this document.



Changes in revised vision

Changes from the vision report and the reasons are given in the response to the June consultation. The main revisions are:

- An indent is shown for parking, including by delivery lorries, in The Square, so that more road width is allowed for vehicles passing through The Square.
- Detailed design stages that follow will need to ensure vehicle access to Jews Lane and driveways off West Street, and to the archways to Printers Mews and Lion House off High Street. Parking spaces and pavement build-outs will need to be carefully planned and positioned.
- The informal bus stopping point on the Co-op side of The Square should be moved to a stop at the town end of either North Street or High Street.
- One of the new trees in The Square has been repositioned slightly, as the finger-post is to be replaced at original location.
- Other features, such as a talking bench, can be considered at later stages.

Next steps

The revised vision will be presented to the Town Council on 17 October 2022, when the Council's approval will be sought.

If approved, the project group will seek to work with the current district and county councils, and then the new Somerset Council, in taking the vision forward.

Funding and implementation

A key issue will be funding. Sources could include infrastructure funding from the new Somerset Council or grants from government and, possibly, other bodies.

Permissions for the works would have to be secured too. It is hoped Somerset Council will be able to assist with these applications and with implementing and building vision proposals for which funding is secured.

The vision provides a guide for improving our town centre. However, adjustments may be required as work proceeds, so it should not be regarded as a precise blueprint.

Further vision details

This revised vision can be read in conjunction with the original vision report, which provides more background and detail. This short revision is intended to summarise the vision and show changes now proposed.

The place-making project that led to this vision for Wiveliscombe town centre was funded from Town Recovery and Welcome Back funds, which were awarded by a local steering group.

Somerset West
and Taunton



Three phases

Page 4

Funding will be needed to implement the town centre improvements and to realise the vision. Ideally, these changes would be fully funded and implemented in one stage.

However, the project steering group suggest the changes could be undertaken in the following three phases, as funding allows. These start with changes giving the most benefit for what should be the lowest costs.

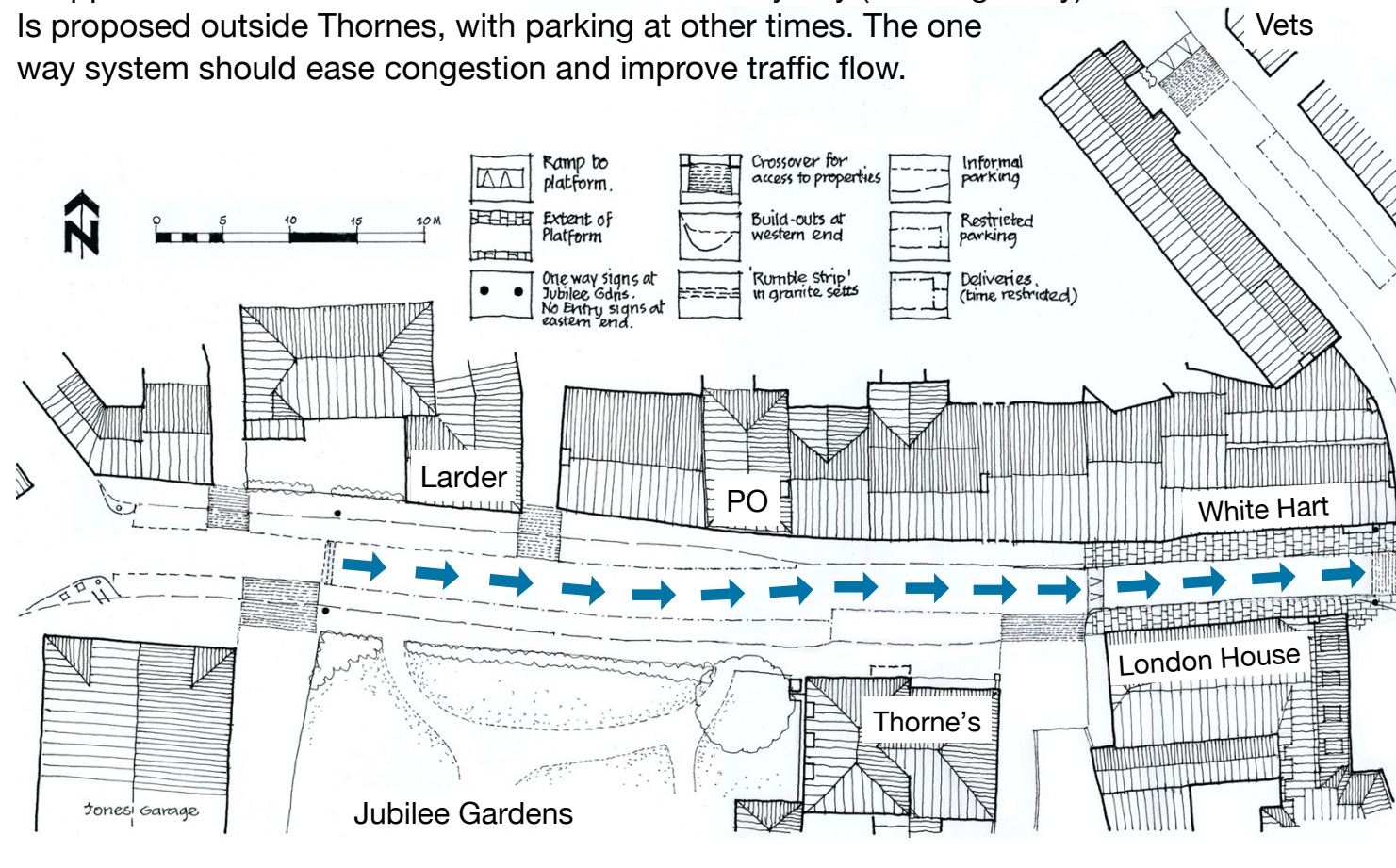
- 1) Phase one involves the one-way system in West Street, along with improvements on the west side of The Square and the informal crossing between dropped kerbs across The Square.
- 2) Phase two would involve the further improvements on the south side of The Square.
- 3) The final phase proposed is the raised platform through The Square and improvements on the north side.

Project group & website

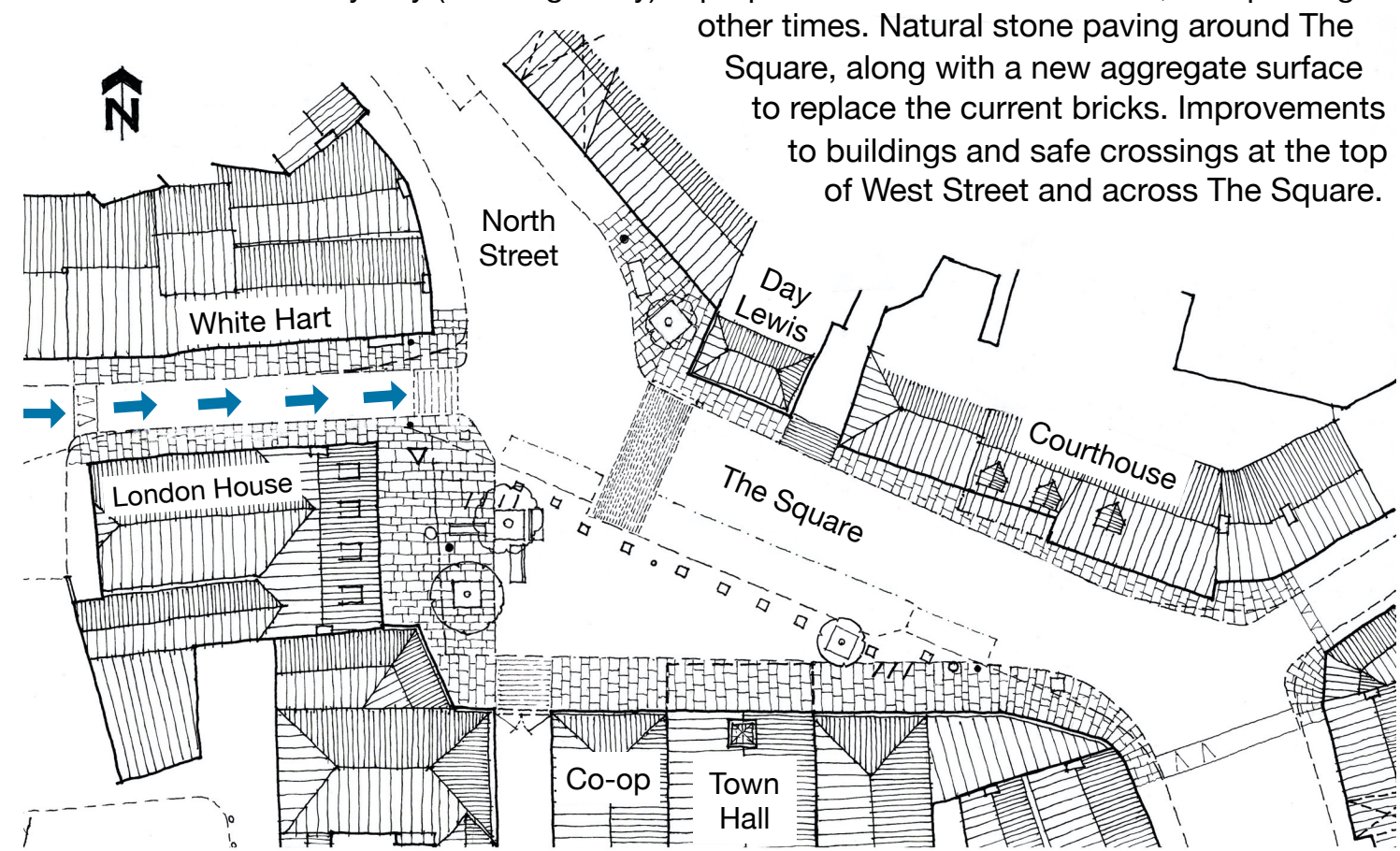
The Town Centre Project Group consists of local elected councillors and representatives from local organisations. Member details, along with meeting minutes, can be viewed on the project website at the address below. The website also contains project reports and the arrangements, findings and responses for three stages of consultation.



One way traffic system on West Street from west to east, starting at Jubilee Gardens and ending at the junction with The Square. This allows space for more time-restricted parking for shoppers on the north side of West Street. A delivery bay (mornings only) is proposed outside Thorne's, with parking at other times. The one way system should ease congestion and improve traffic flow.



Allow time-restricted parking for shoppers in The Square, along with design restrictions to prevent parking on corners and the pedestrian part of The Square, which would be lined with stone cubes. A delivery bay (mornings only) is proposed outside the Town Hall, with parking at other times. Natural stone paving around The Square, along with a new aggregate surface to replace the current bricks. Improvements to buildings and safe crossings at the top of West Street and across The Square.

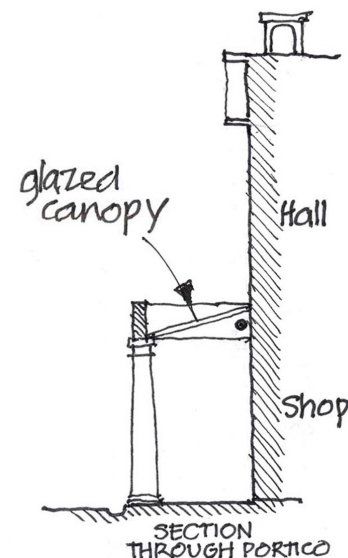


New features in The Square

- Informal crossing (marked on road) between dropped kerbs outside Day Lewis and Co-op in phase 1. There would be a similar crossing with a platform in The Square from phase 3.
- Two additional trees, including one near the library.
- Seats positioned closer to trees, with an additional seat (moved from North Street bus stop).
- Support for re-opening of Town Hall for community use, possibly with a reinstatement of the portico, along with a sloping glazed canopy to allow light through.

Other measures

- 20 mph zone covering the town's central area.
- From the traffic lights, large vehicles delivering to West Street or The Square to be directed (by signs) along Croft Way and up West Street. Similarly, car drivers visiting the town centre directed to Croft Way car park from traffic lights. Large vehicles passing through town to be directed away from West Street and so either along Croft Way (east/west flow) or along High Street (north/south).



Platform in town centre

To slow traffic, a raised platform (orange) is proposed in The Square and extending to the top of West Street and North Street.

Bus loop from Taunton

With the one-way system, buses can take their current route through town from Dulverton to Taunton. Buses from Taunton will take a circular route around the centre: along Croft Way, up West Street, along The Square and High Street and then back along Croft Way and to Dulverton.

